



Product of Australia

# Note Names

## Contents

Worksheet 1	<b>First Notes</b> Colour and copy large notes for small hands.
Worksheet 2	<b>Alphabet Notes</b> Completing note names in alphabetical order, then scrambled.
Worksheet 3	<b>Tracing and Drawing C's</b> Getting to know where the five C's are
Worksheet 4	<b>Wherever there's a C you find an ACE</b> Tracing and drawing A C E in different positions on the staff.
Worksheet 5	<b>Mystery Word</b> Puzzle. Extra notes have been written in to make up a 'missing' word.
Worksheet 6	<b>Match Them Up</b> Draw lines between groups of letters and notes.
Worksheet 7	<b>Music Cross Word</b> The notes are given as the clues to the crossword.
Worksheet 8	<b>Hidden Story 1</b> A story with letters missing. The clues are notes written in the treble.
Worksheet 9	<b>Hidden Story 2</b> A story with letters missing. The clues are notes written in the bass.
Worksheet 10	<b>Word Transfer 1</b> Re-write words using notes on lines or in spaces as required. All in the treble.
Worksheet 11	<b>Word Transfer 2</b> Re-write words using notes on lines or in spaces as required. All in the bass.
Worksheet 12	<b>Keyboard Knowledge</b> Notes are drawn on a keyboard and must be transferred to a stave.
Worksheet 13	<b>Information Sheet</b> Names of all the notes used in these worksheets.

Copyright © Beatrice Wilder 2002  
Published in 2002 by **Music Fun**

P.O. Box 342 Katoomba NSW 2780  
19 Millyard Lane Katoomba 2780

Phone: (02) 4782 3073  
Fax: (02) 4782 6362  
Email: [info@musicfun.com.au](mailto:info@musicfun.com.au)  
Web: [www.musicfun.com.au](http://www.musicfun.com.au)



# Note Names

Worksheet 1

Name .....

## First Notes

Colour the letter names of these notes

Copy them here:

Colour and complete these notes.

\_ rab    \_ inosaur    \_ lephant    \_ ish

Write the correct letter names in these notes:



# Note Names

Worksheet 2

Name .....

## ALPHABET NOTES

Colour and complete the letter names of these notes

A musical staff with a treble clef and a bass clef. The treble clef staff contains notes on the lines and spaces: A (first space), B (second space), C (third space), D (fourth space), E (fifth space), F (first line), and G (second line). The bass clef staff contains notes on the lines and spaces: G (second space), F (first space), E (first space), D (second space), C (third space), B (third space), and A (fourth space).

A musical staff with a treble clef and a bass clef. The treble clef staff contains notes on the lines and spaces: A (first space), B (second space), C (third space), D (fourth space), E (fifth space), F (first line), and G (second line). The bass clef staff contains notes on the lines and spaces: G (second space), F (first space), E (first space), D (second space), C (third space), B (third space), and A (fourth space).

These are a bit mixed up.

A musical staff with a treble clef. The notes are on the lines and spaces: A (first space), B (second space), C (third space), D (fourth space), E (fifth space), F (first line), and G (second line).

Write the correct letters in these notes..

A musical staff with a bass clef. The notes are on the lines and spaces: A (first space), B (second space), C (third space), D (fourth space), E (fifth space), F (first line), and G (second line).

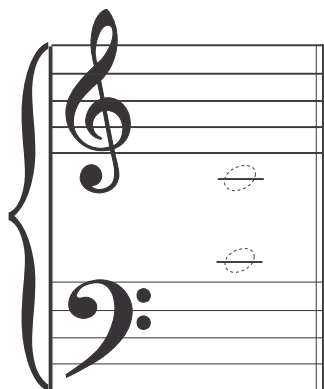


# Note Names

## Worksheet 3

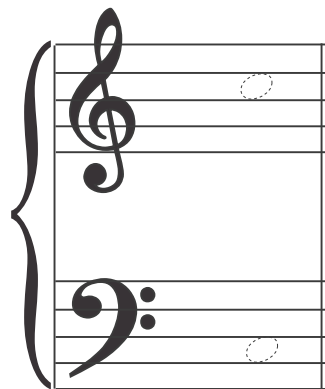
Name .....

# Tracing and Drawing Cs:



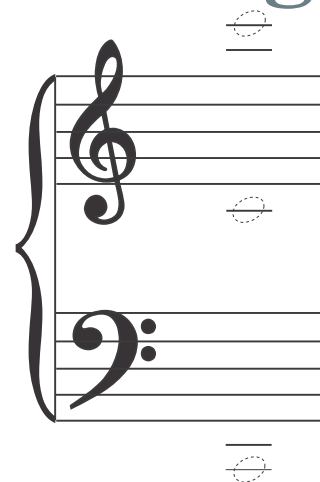
### One Middle C

It can be written in the treble or in the bass



### Two C's in Spaces

Remember which spaces they are



### Three C's on Lines

All are on leger lines



If it is not a C cross it out.

If it is a C, trace it.

	<p>The note this bird is singing is C. draw the C that you think it might be.</p>	<p>Draw the C that you might reach if you sang in a very deep voice.</p>	<p>Draw the lowest C that this lion's voice might reach.</p>	<p>Draw middle C in the bass.</p>	<p>This cat is angry. Draw the C that it might meow at.</p>	<p>Draw the C that you might reach if you sang in a very high voice.</p>



# Note Names

Worksheet 4

Name .....

## Wherever there's a C you can find an ACE



Trace the letters that turn the C into an ACE.

Trace them in the treble and in the bass.





Here is an ACE in the treble.

Can you trace it and find another ACE in the bass?

Here are some Cs for you to trace. Can you turn two of them into ACEs?



Draw these ACEs:

					
					
An ACE that is written in spaces and sounds high.	The highest ACE that you can draw.	The lowest ACE that you can draw.	An ACE that includes middle C	An ACE that is written in spaces and sounds low.	The ACE that you have not written yet.



# Note Names

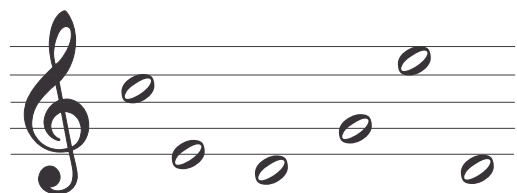
Worksheet 5

Name .....

## Mystery Word

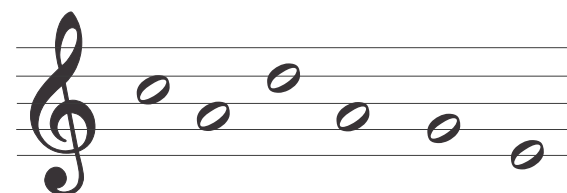
All the words used are in the middle of this page, but there are some hidden extra letters in these words. Write the correct words under the notes.

Then write all the extra letters in the middle. They spell the mystery word.

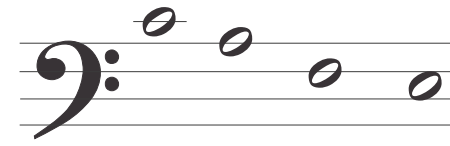
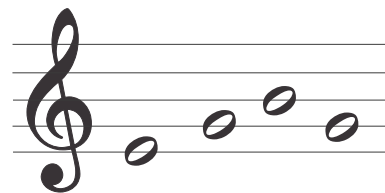
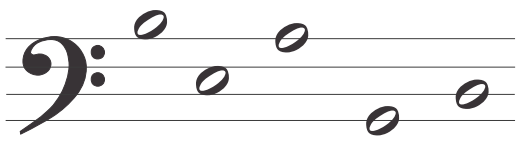
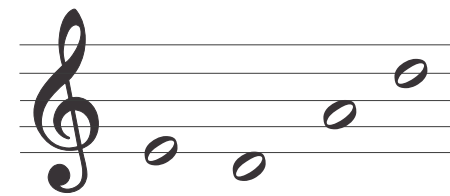
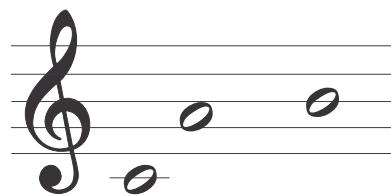
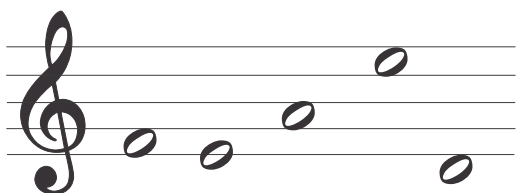


egg  
bag  
cadge  
faded  
edged  
bead

feed  
deaf  
cab  
beef  
dad  
cafe



.....  
[ ]





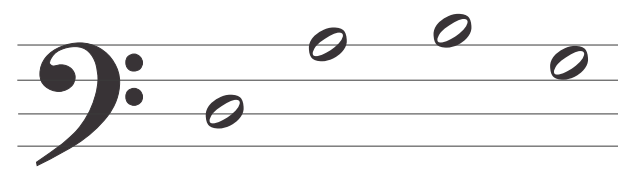
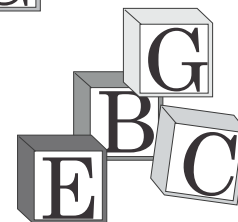
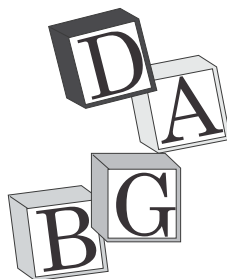
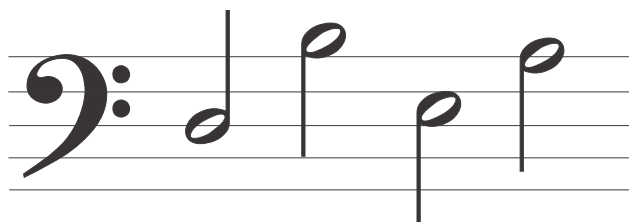
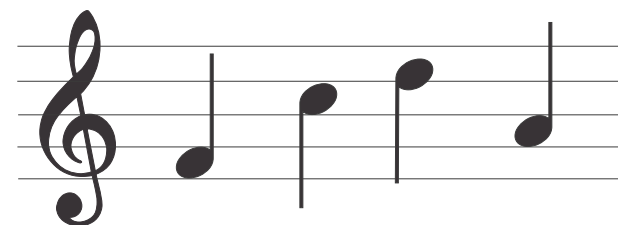
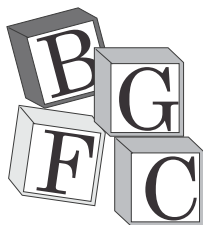
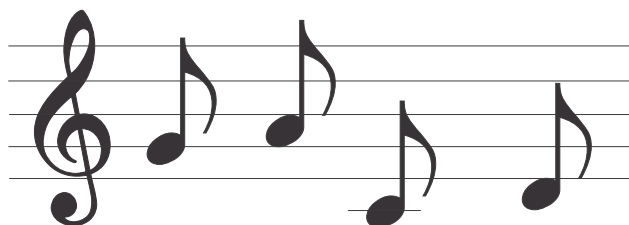
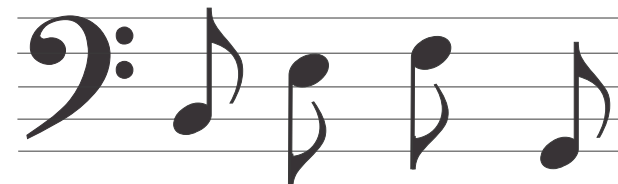
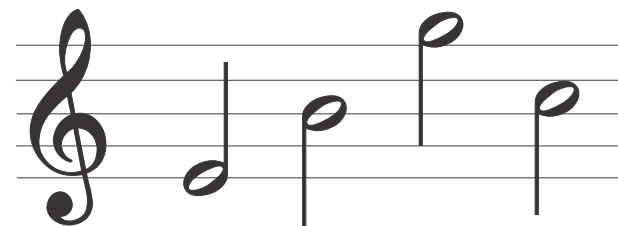
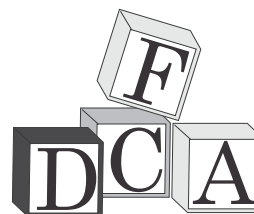
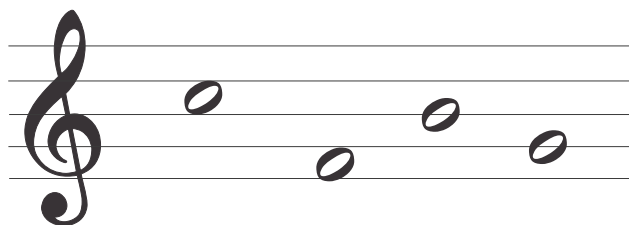
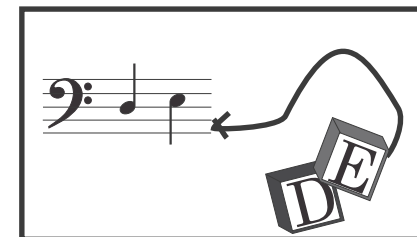
# Note Names

Worksheet 6

Name .....

## Match Them Up

Use lines to join each group of blocks with a matching group of notes.







# Note Names

Worksheet 7

Name .....

## Music Cross Word

Across

1.

5.

6.

8.

9.

1		2				3			
				4		5			
	6		7						
8									
			9						

3.

4.

6.

7.

Down

1.

2.



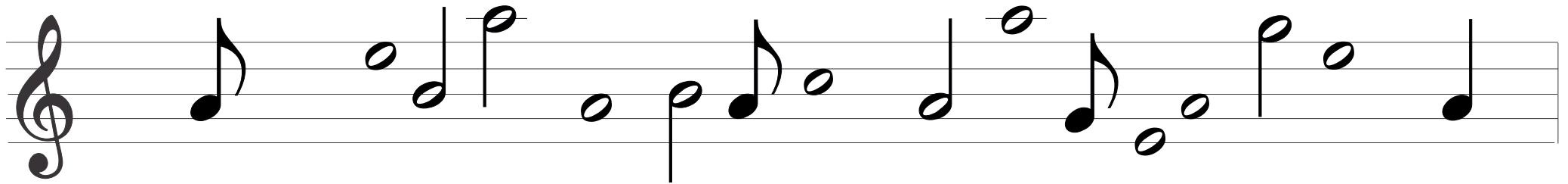
# Note Names

Worksheet 8

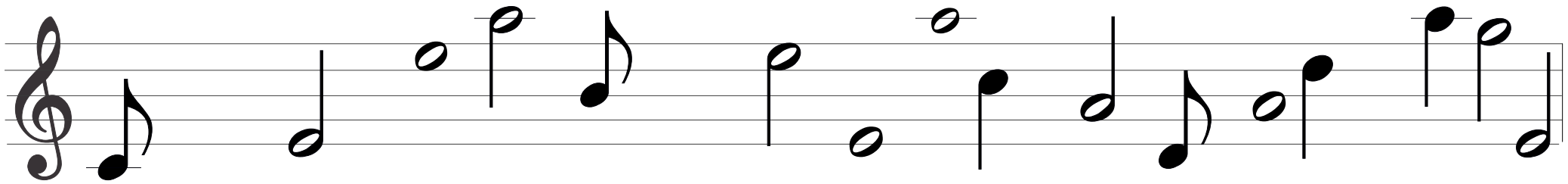
Name .....

## Hidden Story 1

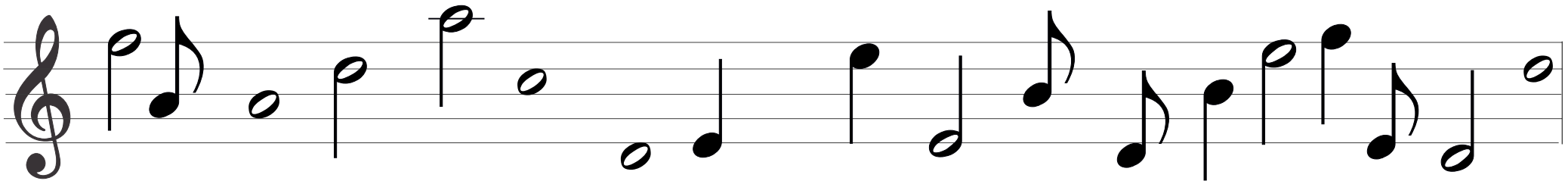
Some of the letters A B C D E F and G have been left out of this story.  
You can find them in the proper order on the staves below. See if you can fill them in  
and complete the story. Use a very sharp pencil and write neatly.



Joh \_ nn S \_ \_ \_ sti \_ n \_ \_ \_ h w \_ s \_ \_ r \_ \_ t \_ \_ r m \_ n



\_ ompos \_ r. H \_ w \_ s \_ orn in \_ is \_ n \_ \_ h \_ n \_ h \_ \_ a l \_ r \_ \_



\_ \_ mily \_ n \_ m \_ ny \_ hil \_ r \_ n. H \_ w \_ nt \_ lin \_ \_ \_ \_ or \_ he \_ ie \_ .



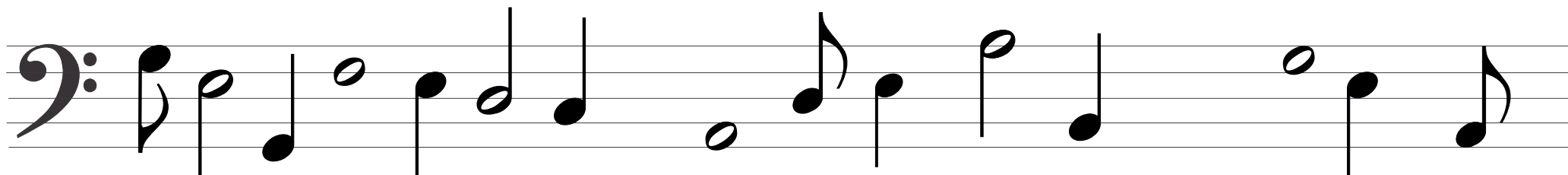
# Note Names

Worksheet 9


Name .....

## Hidden Story 2

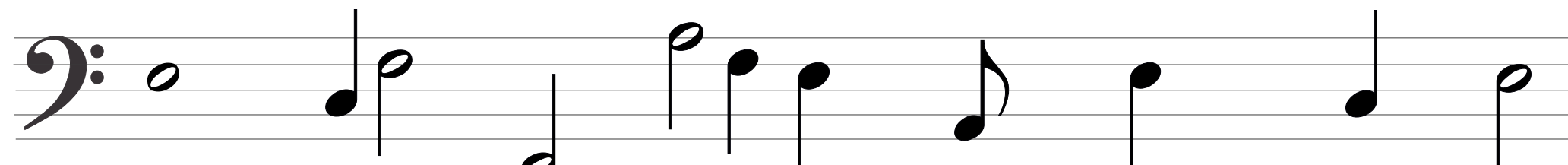
Some of the letters A B C D E F and G have been left out of this story. You can find them in the proper order on the staves below. See if you can fill them in and complete the story. Use a very sharp pencil and write neatly.



\_ \_ or \_ \_ ri \_ \_ ri \_ h H \_ n \_ \_ l w \_ s \_ orn in \_ \_ rm \_ ny.



H \_ liv \_ \_ in \_ n \_ l \_ n \_ \_ or most o \_ his li \_ \_ \_ n \_ wrot \_



th \_ Musi \_ \_ or th \_ Roy \_ l \_ ir \_ works \_ nd v \_ ry mu \_ h mor \_ .



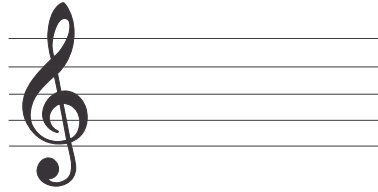
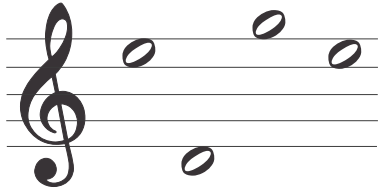
# Note Names

## Worksheet 10

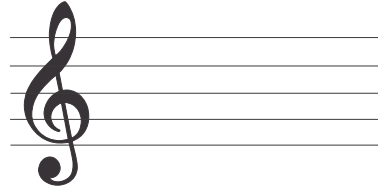
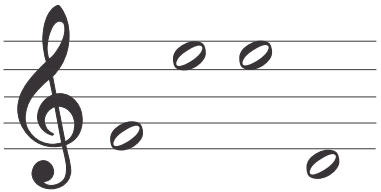
Name .....

# Word Transfer 1

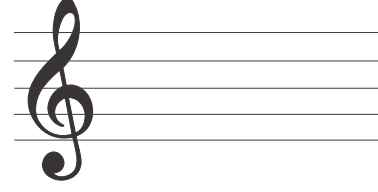
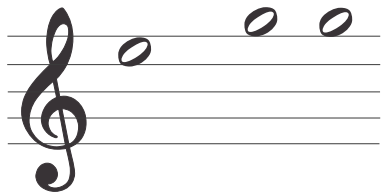
All these words are written using only notes that are in spaces. Can you figure out what the words are, and then write them again, using only notes that are on lines?



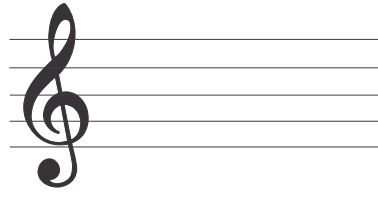
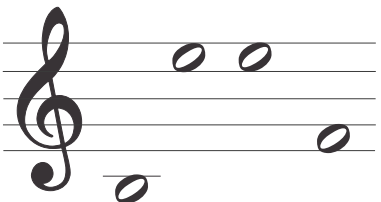
The word is: .....



The word is: .....

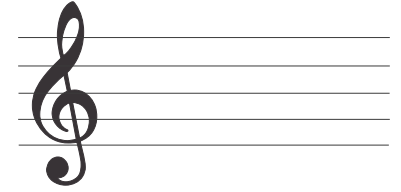
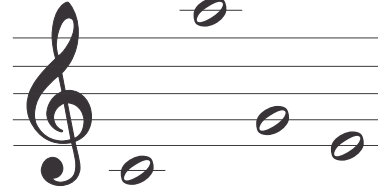


The word is: .....

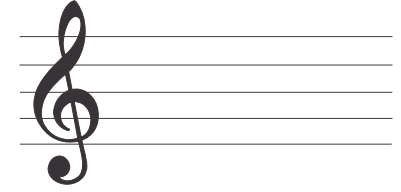
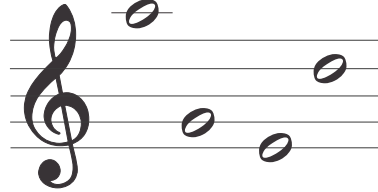


The word is: .....

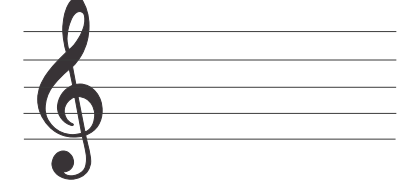
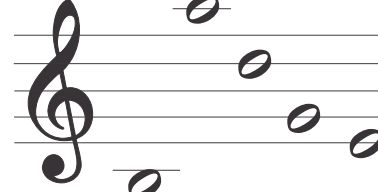
All these words are written using only notes that are on lines. Can you figure out what the words are, and then write them again, using only notes that are in spaces?



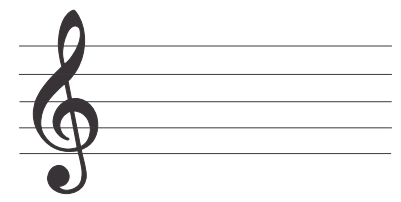
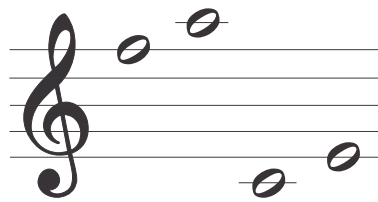
The word is: .....



The word is: .....



The word is: .....



The word is: .....



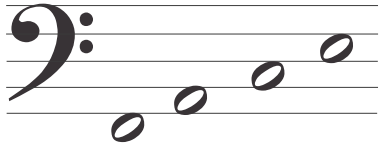
# Note Names

## Worksheet 11

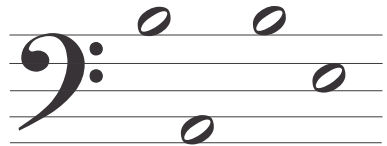
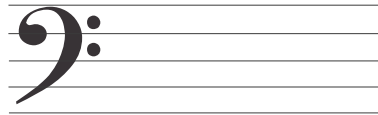
# Word Transfer 2

Name .....

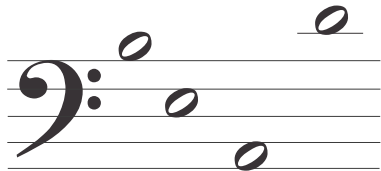
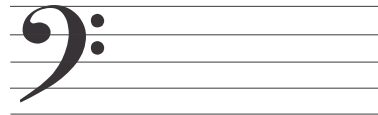
All these words are written using only notes that are in spaces. Can you figure out what the words are, and then write them again, using only notes that are on lines?



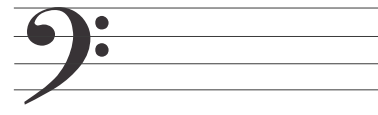
The word is: .....



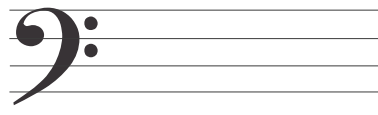
The word is: .....



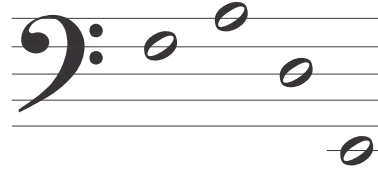
The word is: .....



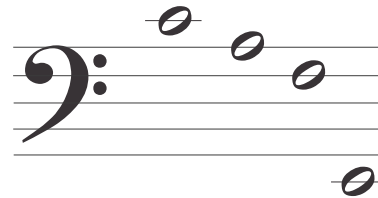
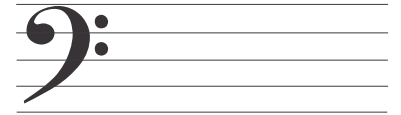
The word is: .....



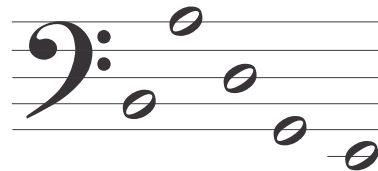
All these words are written using only notes that are on lines. Can you figure out what the words are, and then write them again, using only notes that are in spaces?



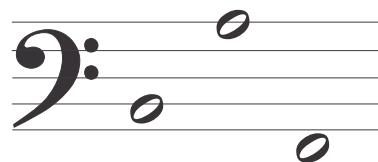
The word is: .....



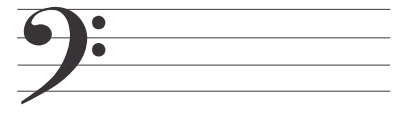
The word is: .....



The word is: .....



The word is: .....





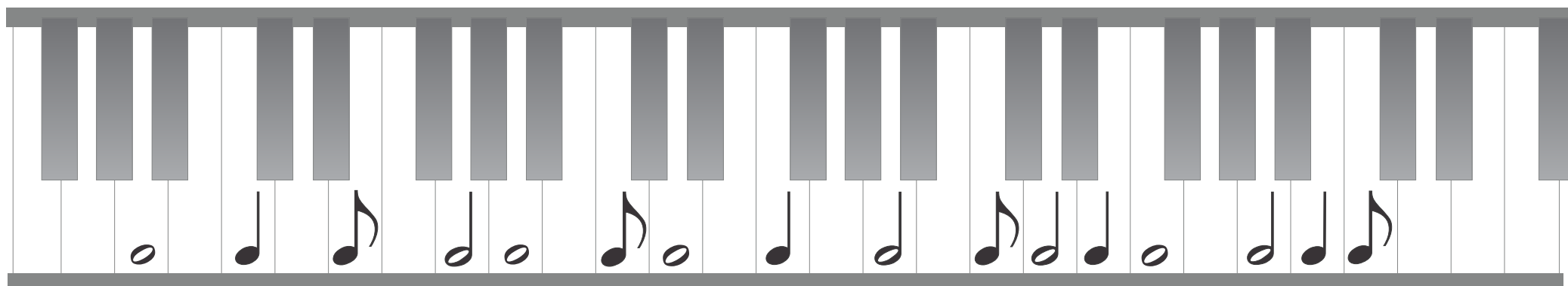
# Note Names

Worksheet 12

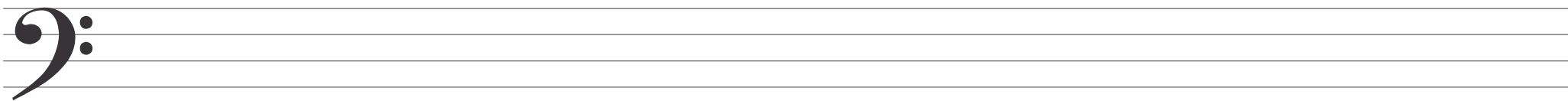
Name .....

## *Keyboard Knowledge*

Place the notes drawn on the keyboard into their correct positions on the staves.  
Draw cross out the notes as you use them.



↑  
Middle  
c



Draw a circle around any semibreve that is also an A.  
Underline the minim that is also a D.



# Note Names

Worksheet 13

# Information Sheet

Every **G**ood **B**oy **D**eserves **F**ruit

**F** **A** **C** **E** **F** **A** **C** **E** **F** **A** **C** **E** **F**





**G**ood **B**irds **D**on't **F**ly **A**way

**A** **C** **E** **G** **A** **C** **E** **G**

A musical staff with two staves (treble and bass clefs) showing the notes of the alphabet. The treble clef staff contains notes from C to A, and the bass clef staff contains notes from E to C.

A diagram of a piano keyboard with keys labeled with the letters F, G, A, B, C, D, E, F, G, A, B, C, D, E, F, G, A, B.

## The notes used in these worksheets are:

-  **semibreve (or whole note)**  
The semibreve is the longest note in general use.
-  **minim (or half note)**  
A minim is played for half the time of a semibreve.
-  **crotchet (or quarter note)**  
A crotchet is played for half of the time of a minim.
-  **quaver (or eighth note)**  
A quaver is played for half of the time of a crotchet.